

CLIMATE ADAPTATION

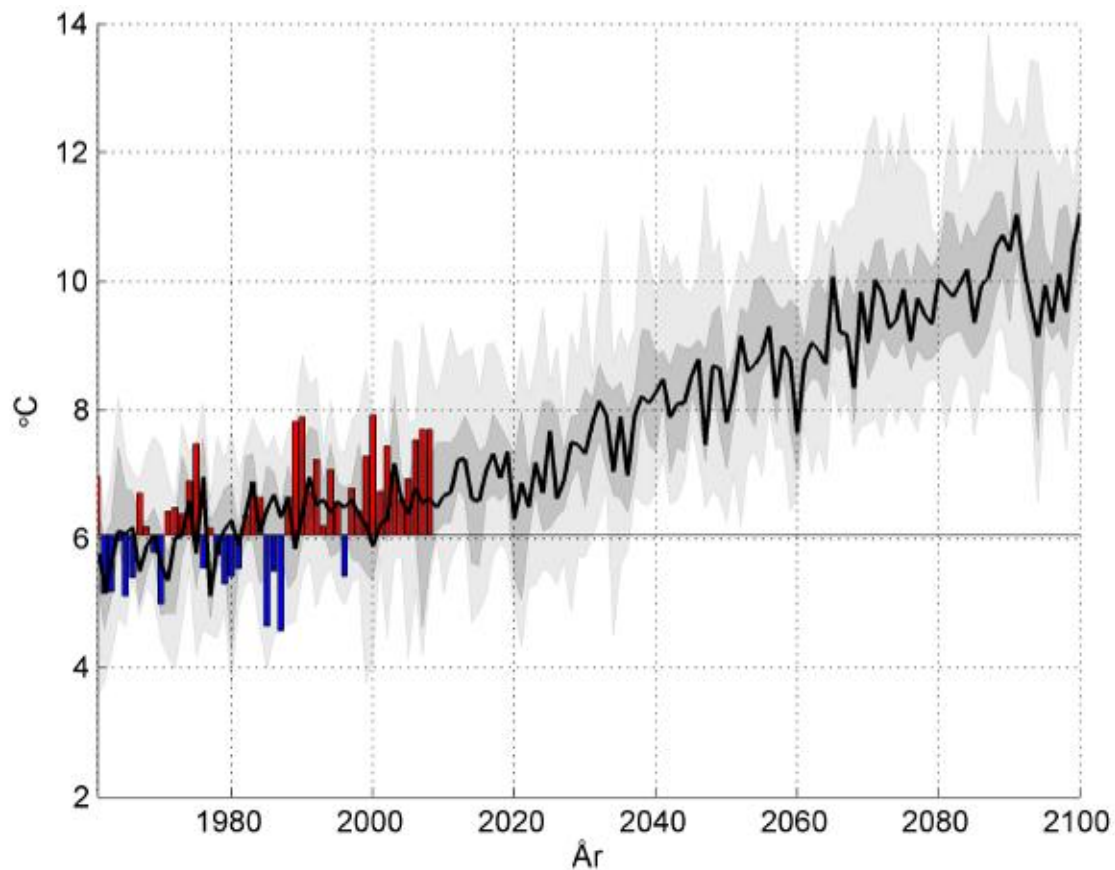
- Adapt the community to handle the effects of climate change
- Minimize costs
- Seize opportunities

= Climate adaptation

CLIMATE ADAPTATION

- Warmer, mostly in the winter, but also in the summer
- More precipitation, especially in the winter
- Milder winters, less days with snow
- More extreme water flow
- More extreme weather – heavy rainfall, heatwaves
- Longer growing season
- Winds and storms?

Temperature change in our region



2-3 degrees increase
of mean annual
temperature until
2050's

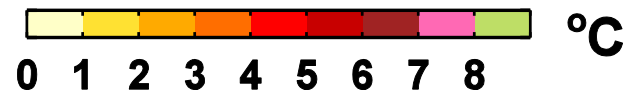
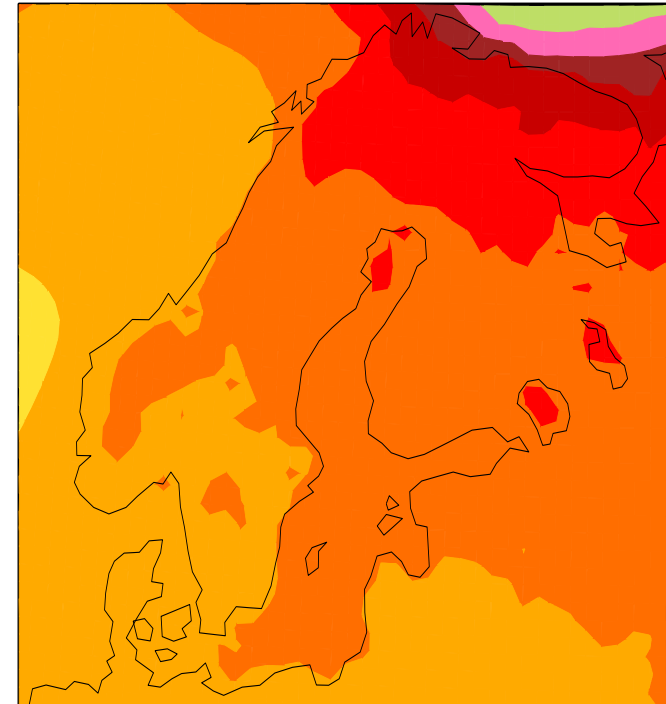
*Swedish Metrological and
Hydrological Institute
(SMHI): 16 scenarios*

Higher temperatures – warmer winters

- Higher temperature raise in Sweden than globally
- Higher temperature raise in north of Sweden

2071-2100 vs 1961-1990

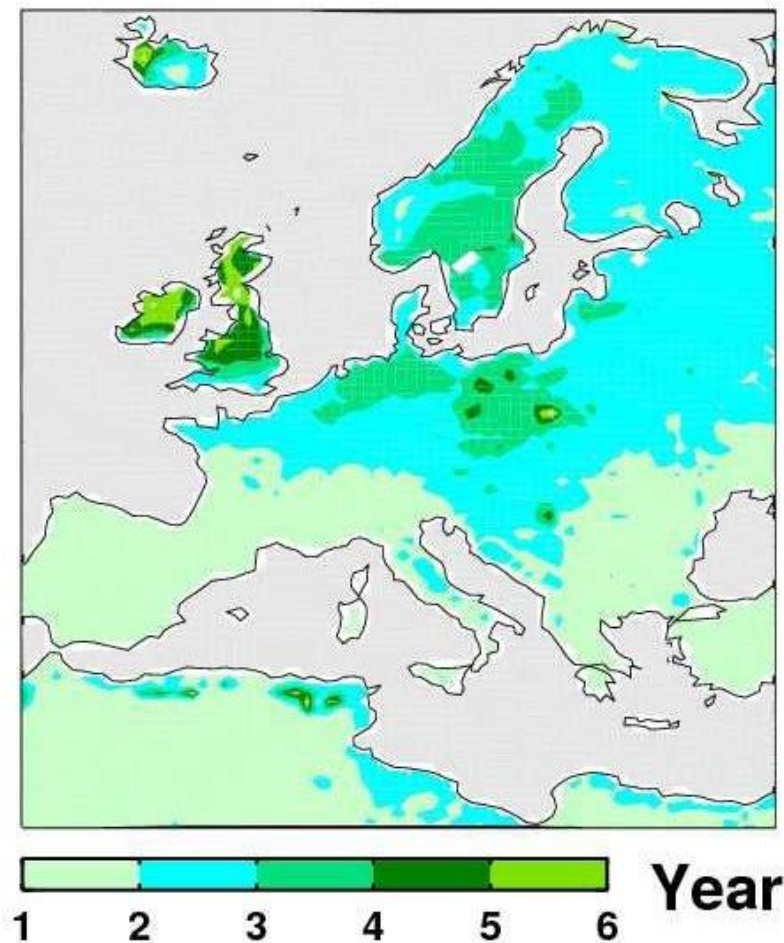
*Swedish Metrological and
Hydrological Institute
(SMHI): 6 scenarios*



Extreme temperatures

- Picture shows how often extreme (warm) temperatures will occur in Sweden during summer in 100 years from now
- Today, these temperatures occur every 20th year

Source: G. Nikulin et al,
www.smhi.se

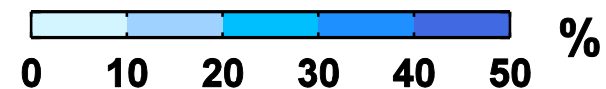
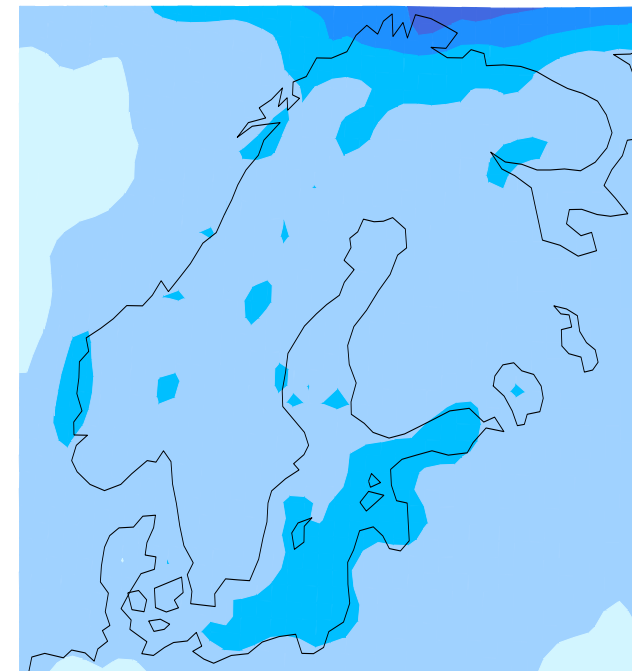


Percipitation

- More percipitation, mostly in the winter
- The risk of heavy rainfall will increase

2071-2100 vs 1961-1990.

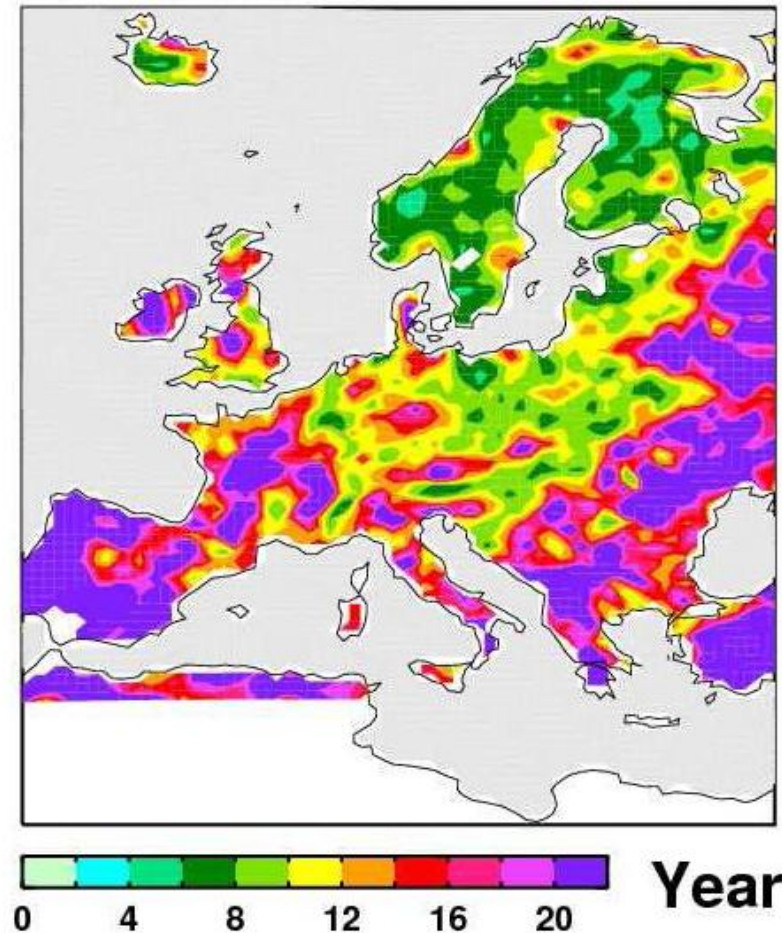
*Swedish Metrological and
Hydrological Institute
(SMHI): 6 scenarios*



Extreme precipitation

- Picture shows how often extreme precipitation will occur in summer in 100 years from now
- Today, extreme precipitation occurs every 20th year

Source: G. Nikulin et al,
www.smhi.se



CLIMATE ADAPTATION PLAN

- What are the effects of climate change in our region?

To date...

1. Information to politicians and municipal officials

- Information about climate changes and need for adaptation – *the County Administrative Board*
- Information about the CLIPART-project and how Växjö is planning the climate adaptation process
- Workshop – risks and possibilities with climate changes in this region

2. Appoint members to the project

- Expertise knowledge **or** member of management - from relevant administrations in the municipality

To do...

3. Impact- and vulnerability assessment

- How will important functions in the municipality be affected by the climate changes?

4. Measures- and cost assessment

- What are the appropriate measures to be taken in order to prevent negative impact caused by climate changes?

The process...

